

HOUSE *of* ONYX, INC.

VOLUME 533 EARLY AUTUMN 2018



*Shop the
cover on
page 3.*

120 North Main Street, Greenville, KY 42345-1504
TOLL FREE: 800-844-3100 LOCAL: 270-338-2363
www.houseofonyx.com sales@houseofonyx.com

Beads		Jewelry cont.	
Bracelets, Stretch	41, 42	Sapphire, Golden	20
Loose	38, 39	Sapphire, Orange	18, 35
Lots	38	Sapphire, Pink	14, 15
Tiger's Eye, Blue	40	Sapphire, Purple	18
Tiger's Eye, Golden	40	Sapphire, Rainbow	29
Tiger's Eye, Red	40	Sapphire, Yellow	19
Fossils		Sterling Silver	8, 9, 16, 30, 41
Ammonite	43	Sugilite	3
Dinosaur	45	Sunstone, Oregon	17
Knightia Fish	45	Topaz, London Blue	3
Petrified Wood	45	Topaz, Swiss Blue	17
Gemstones		Tourmaline, Blue	3
Discount	21, 22, 23, 24, 25, 26, 28	Turquoise	16, 30
Emerald, Closeout	37	Minerals	
Sapphire, Blue	21, 22	Amethyst	43, 44
Sapphire, Color Change	23	Arrowhead, Rhyolite	42
Sapphire, Colorless	22, 23	Calcite	42
Sapphire, Fancy	24, 25	Copper	44
Sapphire, Golden	25, 26	Corundum, Rough	43
Sapphire, Green	26	Emerald, Rough	37
Sapphire, Orange	24	Fluorite	43
Sapphire, Pink	27, 28	Jadite, Nephrite	43
Sapphire, Purple	27	Lapis Lazuli	13
Sets, Corundum	37	Mohawkite	44
Jewelry		Pyrite	42
Aquamarine	36	Quartz	42, 44
Citrine	32, 33, 34, 36	Sandstone	42
Closeout	35	Smithsonite	44
Coin	31	Sphalerite	44
Diamond	17, 36	Tourmaline, Black	44
Emerald	35	Miscellaneous	
Estate	16, 17, 36	Coins, Foreign	31
Garnet, Rhodolite	35	Donuts, Gemstone	39
Intarsia	3	Pendants, Gemstone	41
Kyanite	3	Pendants, Turtle	41
Labradorite	9	Shell, Polished Mussel	42
Lapis Lazuli	10, 11, 12, 13, 17, 36	Onyx	
Maw-Sit-Sit	3	Animals	46
Opal	17	Eggs	46
Pearl	35	Fruit, Dyed	46
Rainbow	29, 36	Worrystones	46
Ruby	36	Spheres & Eggs	
Sapphire, Blue	4, 5, 6, 7	Egg, Ruby	42
Sapphire, Colorless	19		
Sapphire, Fancy	18		

Succulent Styles

A #ARS-PD17750

14Kt. White Gold pendant with 6x8mm oval London Blue Topaz of .75 Cts. and round Diamonds of .05 Cts. TW. \$440.00



B #17371

14Kt. White Gold ring with checkerboard faceted 10x12mm cushion London Blue Topaz of 6.43 cts. and round Diamonds of .03 cts. TW. Size 6 1/2. \$1,075.00



D



C #LR-47

14Kt. Yellow Gold pendant with 17x26mm fancy Sugilite Cab of 2.11 grams and four round Diamonds of .04 Cts. TW. \$400.00

D #LR-39

14Kt. Yellow Gold pendant with pear shape Sugilite Cab of 2.87 Gms. and round Diamond of .03 Cts. set in White Gold. \$420.00

E #LR-50

14Kt. Yellow Gold pendant with 13x26mm flat top pentagon Sugilite cab of .81 grams and two round Diamonds of .03 Cts. TW. \$340.00

F #CSJ-1490

14Kt. Yellow Gold earrings with 4x6mm oval Maw-Sit-Sit Cabs of 1.08 Cts. TW and post backs. \$100.00/pr.

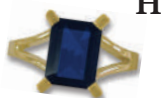


G #17350

14Kt. Yellow Gold ring with 5x7mm octagon Blue Tourmaline of 1.19 Cts. and thirty-two round Diamonds of .34 Cts. TW. Size 6 1/2. \$1,200.00

H #17215

14Kt. Yellow Gold ring with 6x8mm octagon Kyanite (Nepal) of 2.11 Cts. Size 6. \$500.00



I #V71

14Kt. Yellow Gold pendant enhancer with 21.1x39mm Hexagon Intarsia by Jim Kaufmann. Sugilite with Australian Opal, Turquoise and Black Jade. 27.94 cts. TW. \$2,270.00



View more beautiful Intarsia by Jim Kaufmann on our website.
www.houseofonyx.com

Blue Sapphire Jewelry



A

A #GSJ-2135/FS-7088
18Kt. Yellow Gold pendant enhancer/brooch with 7.3mm round Kanchanaburi Blue Sapphire of 1.76 Cts. and one hundred seven round Diamonds of 1.30 Cts. TW.

\$6,000.00



B

B #SC-PTSA-0433-X1

14Kt. White Gold pendant with 4x6mm oval Blue Sapphire of .75 Cts., twelve round Diamonds of .38 Cts. TW and four marquise Diamonds of .33 Cts. TW. \$1,122.00



C



D



E

C #CSJ-1163

14Kt. Yellow Gold pendant with 7.2x9.4mm pear shape Ceylon Blue Sapphire of 2.58 Cts.

\$1,200.00



F



G



H

D #BS-PND-1097

14Kt. Yellow Gold pendant with .95 Cts. trillion Blue Sapphire. \$1,097.00

E #RON-04-27-04

18Kt. Yellow Gold pendant with 5.1mm round Cambodian Blue Sapphire of .81 Cts. and eighteen round Diamonds of .26 Cts. TW. \$1,050.00

F #CSJ-1167

14Kt. Yellow Gold pendant with 4.9x7.2mm oval Ceylon Blue Sapphire of 1.10 Cts. and round Diamond of .02 Cts. \$775.00

G #TBM-23241

14Kt. White Gold pendant with 5mm round Blue Sapphire of .80 Cts. and sixteen round Diamonds of .10 Cts. TW. \$375.00

H #SC-PTSA-0623-X2

14Kt. White Gold pendant with 4mm round Blue Sapphire of .33 Cts. and three round Diamonds of .03 Cts. TW. \$200.00

I #RON-BS-P155

14Kt. Yellow Gold pendant with 5.7mm round Ceylon Blue Sapphire of 1.06 Cts. \$155.00



I



J

J #RON-2737

14Kt. White Gold pendant with 5.8mm round Ceylon Blue Sapphire of .93 Cts. \$135.00

K #SC-BRSA-54

14Kt. White Gold brooch/pendant with 2.5x5mm marquise Blue Sapphire of .16 Cts. and fifty-two round Diamonds of .30 Cts. TW. \$625.00

L #P1767

14Kt. White Gold brooch with 1.00 Ct. TW round Diamonds and four round Blue Sapphires of 1.00 Ct. TW. \$2,089.00



L

M #BK-9924994

14Kt. Yellow Gold brooch with two trillion Blue Sapphires of 1.10 Cts. TW. \$450.00



M



K

Blue Sapphire Jewelry



A



B



C



D



E

A #17287

18Kt. Yellow Gold ring with 6.8mm round Thai Blue Sapphire (K) of 1.65 Cts. and twenty-two round Diamonds of 1.20 Cts. TW. Size 6 3/4. \$7,500.00

B #14905

18Kt. Yellow Gold ring with 6.4x7.6mm oval Blue Sapphire of 2.08 Cts., ten round Diamonds of .28 Cts. TW and tapered baguette Diamonds of .47 Cts. TW and four marquise Diamonds of .22 Cts. TW Size 5 3/4. \$6,000.00

C #15077

18Kt. Yellow Gold ring with 5.5x7mm oval Fine Ceylon Blue Sapphire of 1.41 Cts. set in White Gold and baguette Diamonds of .95 Cts. TW. Size 6 1/2. \$4,200.00

D #16629

18Kt. White & Yellow Gold ring with 5.8mm round Thai Blue Sapphire of .86 Cts., eight princess cut Diamonds of .95 Cts. TW and ten round Diamonds of .21 Cts. TW. Size 6 1/2. \$3,900.00

E #15703

18Kt. Yellow Gold ring with two 3.4mm round Rubies of .41 Cts. TW and 6.3x6.1mm off round Ceylon Blue Sapphire of 1.48 Cts. set in White Gold. Size 7 1/2. \$3,500.00



F



G



H



I

F #14959

14Kt. Yellow Gold ring with 5x7mm oval Ceylon Blue Sapphire of 1.68 Cts. and two round Diamonds of .27 Cts. TW. Size 6. \$3,100.00

G #13860

18Kt. White Gold ring with 7mm round Blue Sapphire of 1.42 Cts. and twenty-two round Diamonds of .27 Cts. TW. Size 6 1/2. \$2,400.00

H #16182

14Kt. Yellow Gold ring with 5.2x7mm oval Ceylon Blue Sapphire of 1.14 Cts. and two 3x5mm pear shape Colorless Sapphires of .50 Cts. TW. Size 6 1/2. \$2,000.00

I #13905

18Kt. Yellow Gold ring with 4.7x6mm oval Blue Sapphire of .77 Cts., ten round Diamonds of .31 Cts. TW and fourteen tapered baguette Diamonds of .21 Cts. TW. Size 6 1/2. \$1,725.00

Blue Sapphire Jewelry



A

A #12696

18Kt. Yellow Gold ring with 5x6.5mm oval Blue Sapphire of .72 Cts. and four marquise Diamonds of .17 Cts. TW. Size 6 3/4. **\$1,000.00**



B

B #13576

14Kt. Yellow Gold ring with 5x6mm oval Blue Sapphire of 1.03 Cts. and tapered baguette Diamonds of .15 Cts. TW. Size 5 1/2. **\$875.00**



C

C #MMO-568103

14Kt. White Gold band ring with 4mm round Blue Sapphire of .38 Cts. and twelve round Diamonds of .10 Cts. TW. Size 7. **\$505.00**



D

D #16424

14Kt. White Gold ring with eight 1.9mm princess cut Blue Sapphires of .42 Cts. TW and three 1.9mm princess cut Diamonds of .13 Cts. TW. Size 7. **\$575.00**



E

E #BK-128075

7" long, 14Kt. Yellow Gold bracelet with twenty 5mm round Blue Sapphires of 12.80 Cts. TW, twenty round Diamonds (G/VS1-2) of .85 Cts. TW and slide clasp with safety. **\$3,600.00**



F

F #AZ-BA020S1PWG-2.50

18Kt. White Gold bangle bracelet of 7.70 Gms. with 2mm round Blue Sapphires of 3.82 Cts. TW. 2.5" inside diameter. **\$3,400.00**



Actual Size

G



Smaller than actual size to show full bracelet.

G #SC-BLSA-0243-X1

7.25" long 14Kt. White Gold bracelet with forty-four round Blue Sapphires of 1.42 Cts. TW, seventy-two round Diamonds of .47 Cts. TW and slide clasp with safety. **\$3,000.00**



H

H #16809

14Kt. White Gold ring with ten round Blue Sapphires of .21 Cts. TW and fifty-nine round Diamonds of .28 Cts. TW. Size 7. **\$1,500.00**



I

I #SC-PTSA-0995-X1

14Kt. White Gold pendant with ten round Blue Sapphires of .23 Cts. TW and sixty round Diamonds of .35 Cts. TW. **\$1,339.00**

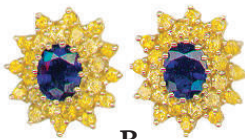
Blue Sapphire Jewelry



A

A #TBM-38637-BS

14Kt. Yellow Gold earrings with 6.7mm round Blue Sapphires of 3.41 Cts. TW, fifty round Diamonds of .95 Cts. TW and top wires. \$4,985.00/pr.



B

B #GSJ-2479

14Kt. Yellow Gold earrings with 5.3x7.1mm oval Cambodian Blue Sapphires of 2.15 Cts. TW, forty-eight 1.75mm round Golden Sapphires of 1.33 Cts. TW and screw post backs. \$3,200.00/pr.



C

C #AD-THE-2600

14Kt. Yellow Gold earrings with 5x7mm oval Madagascar Blue Sapphires of 2.45 Cts. TW, round & baguette Diamonds of 1.48 Cts. TW and post & clip backs. \$2,600.00/pr.



D

D #CSJ-1088

14Kt. Yellow Gold earrings with 7mm heart shape Blue Sapphires of 3.12 Cts. TW and lever backs. \$2,450.00/pr.

E #SC-EPSA-1339-X1

14Kt. White Gold earrings with 3mm round Blue Sapphires of .28 Cts. TW, fifty-two round Diamonds of .31 Cts. TW and post backs. \$1,038.00/pr.

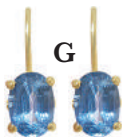


E

F

F #ARS-113610

16" 14Kt. White Gold necklace with twenty-six round Blue Sapphires of .45 Cts. TW, round Diamonds of .65 Cts. TW and hook & slide clasp. \$2,400.00



G

G #CSJ-1081

14Kt. Yellow Gold earrings with two 5x7.5mm oval Ceylon Blue Sapphires of 2.89 Cts. TW with lever backs. \$2,255.00/pr.



H

H #RON-BS-ER1275

14Kt. Yellow Gold earrings with 6.7x8.8mm octagon Thai Blue Sapphires of 4.40 Cts. TW and post backs. \$1,275.00/pr.



J

J #CSJ-1518

14Kt. Yellow Gold earrings with 4.9mm round Cambodian Blue Sapphires of 1.44 Cts. TW and lever backs. \$1,200.00/pr.



K

K #RON-1070

14Kt. Yellow Gold earrings with 5.6mm round Blue Sapphires of 1.70 Cts. TW and post backs. \$1,000.00/pr.

K #RON-376

14Kt. Yellow Gold earrings with 4x6mm oval Ceylon Blue Sapphires of 1.22 Cts. TW, two round Diamonds of .02 Cts. TW and post backs. \$625.00/pr.

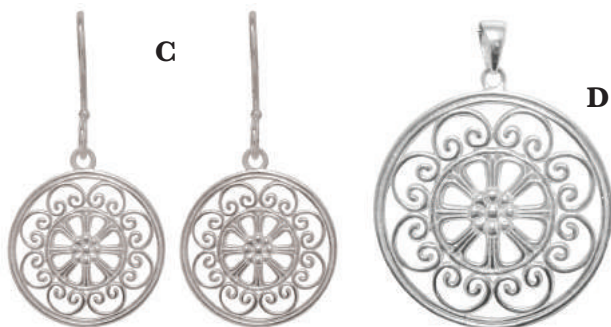
NEW STERLING SILVER JEWELRY



A #ELY-73063
20mm round Sterling Silver shamrock disc pendant. \$27.00

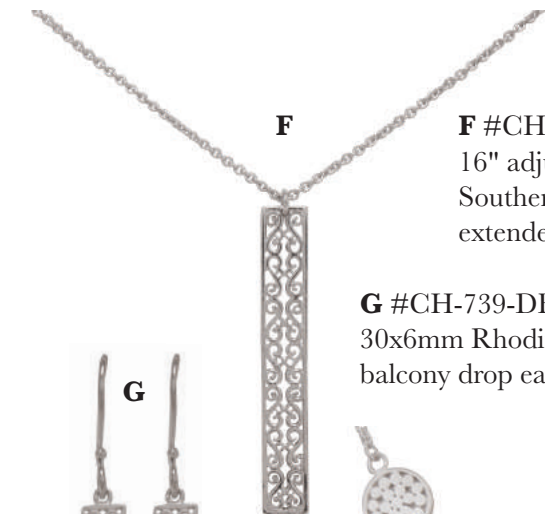
B #ELY-10116
20mm round Sterling Silver shamrock earrings with shepherd's hooks. \$41.00/pr.

C #CH-739-DER-E541
Sterling Silver Southern Gates
20mm round art-deco design
earrings with shepherd's hooks. \$65.00/pr.



D #CH-740-DER-P956
Sterling Silver Southern Gates
Collection 30mm round art-deco
design pendant. \$65.00

E #CH-722-DER-B298
7.75" adjustable Rhodium-plated
Sterling Silver Southern Gates
balcony bracelet with adjustable
smart bead lobster claw clasp. \$52.00



F #CH-714-DER-C225
16" adjustable Rhodium-plated Sterling Silver
Southern Gates vertical balcony necklace with 2"
extender and lobster claw clasp. \$70.00



G #CH-739-DER-E516
30x6mm Rhodium-plated Sterling Silver Southern Gates
balcony drop earrings with shepherd's hooks. \$45.00/pr.

H #SS-2352
32" Indiri Collection Sterling Silver &
18Kt. Gold Vermeil round disc station
necklace with lobster claw clasp. \$191.00



NEW STERLING SILVER JEWELRY



A

A #CH-714-DER-C219

16" Adjustable Sterling Silver Southern Gates southern oak tree of life necklace with 2" extender and lobster claw clasp.

\$57.00



B

B #CH-739-DER-E441

Rhodium-Plated Sterling Silver Southern Gates Collection 10mm southern oak tree stud earrings with post backs.

\$34.00/pr.



C

C #CH-740-DER-E504

Sterling Silver Southern Gates Collection 20mm holiday heart tree earrings with shepherd's hooks.

\$34.00/pr.



D

D #CH-740-DER-P930

Sterling Silver Southern Gates Collection 30mm holiday heart tree pendant.

\$34.00

E #CH-740-DER-P207

Sterling Silver Southern Gates Collection 18x25mm oval southern oak tree pendant.

\$30.00



E

F

F #CH-740-DER-E379

Sterling Silver Southern Gates Collection 18x25mm oval southern oak tree earrings with shepherd's hooks.

\$48.00/pr.

G #ELY-10107

Sterling Silver Celtic knot earrings with shepherd's hooks.

\$54.00/pr.



G



H

H #ELY-73115

7/8" x 1 3/4" Sterling Silver floral cross pendant.

\$32.00



I

I #ELY-73107

1" x 1 1/2" Sterling Silver Celtic cross pendant.

\$32.00

J #SBC-57015R-LAB

Samuel B. Collection Sterling Silver ring with 14mm cushion Labradorite cab and 18Kt. Yellow Gold accents. Size 11.

\$200.00



J

FREE standard shipping on orders over

9

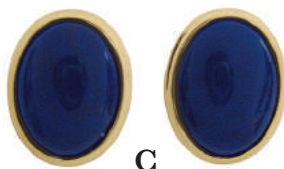
Lapis Lazuli Jewelry



A



B



C



D

A #SC-EFLP-0002-X6

14Kt. Yellow Gold earrings with 12x16mm oval Lapis Lazuli cabs with fluted trim and post & clip backs. \$530.00/pr.

B #SC-ERLP-0033-X5-Y

14Kt. Yellow Gold earrings with 10x14mm oval Lapis Lazuli cabs, rope trim and post backs. \$466.00/pr.

C #SC-EFLP-0001-X6

14Kt. Yellow Gold earrings with 12x16mm oval Lapis Lazuli cabs and post & clip backs. \$440.00/pr.

D #SC-ERLP-314

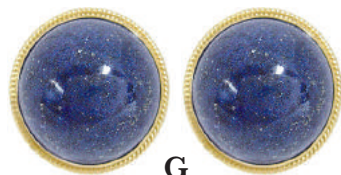
14Kt. Yellow Gold earrings with 10x14mm oval Lapis Lazuli cabs, twisted rope trim and post & clip backs. \$440.00/pr.



E



F



G

E #CSJ-4473

14Kt. Yellow Gold earrings with 14x20mm oval Lapis Lazuli slabs and post & clip backs. \$400.00/pr.

F #SC-ERLP-708-F1

14Kt. Yellow Gold earrings with fluted Lapis Lazuli cabs and post & clip backs. \$395.00/pr.

G #SC-ERLP-0008-F1

14Kt. Yellow Gold earrings with 20mm round Lapis Lazuli high domed cabs and post & clip backs. \$392.00/pr.



H

H #SC-ERLP-49

14Kt. Yellow Gold earrings with 13x18mm oval Lapis Lazuli cabs, greek key design and post & clip backs. \$350.00/pr.



I

I #SC-ERLP-721-F1

14Kt. Yellow Gold earrings with 18x18mm fluted pear shape Lapis Lazuli cabs and post & clip backs. \$340.00/pr.

Lapis Lazuli Jewelry



A

A #GSJ-6-NK-3900
15.5" 14Kt. Yellow Gold necklace with Lapis Lazuli and forty-seven round Diamonds of .45 Cts. TW set in White Gold. \$3,900.00

B #GSJ-6-ER-1150
14Kt. Yellow Gold earrings with Lapis Lazuli, fifty round Diamonds of .50 Cts. TW set in White Gold and post & clip backs. \$1,150.00/pr.



B



C

C #17204
14Kt. Yellow Gold ring with Lapis Lazuli and twenty-three round Diamonds of .23 Cts. TW set in White Gold. Size 7. \$700.00

D #SC-EPLP-1238-X1
14Kt. Yellow Gold earrings with 8mm cushion Lapis Lazuli Cabs, seventy round Diamonds of .49 Cts. TW and post backs. \$1,616.00/pr.



D

E

E #SC-PTLP-0747-X1
14Kt. Yellow Gold pendant with 8mm cushion Lapis Lazuli Cab and thirty-eight round Diamonds of .24 Cts. TW. \$782.00

F #GSJ-24-NK-1700
16" 14Kt. Yellow Gold necklace with carved Lapis Lazuli and thirty-three round Diamonds of .27 Cts. TW set in White Gold. \$1,700.00



F

G #GSJ-24-ER-800
14Kt. Yellow Gold earrings with carved Lapis Lazuli, twenty round Diamonds of .14 Cts. TW set in White Gold and post & clip backs. \$800.00/pr.

H #17203
14Kt. Yellow Gold ring with carved Lapis Lazuli and ten round Diamonds of .07 Cts. TW set in White Gold. Size 6 3/4. \$600.00



G

H

I #SC-ERLP-0080
18Kt. Yellow Gold earrings with 14mm cushion Lapis Lazuli cabs, fourteen round Diamonds of .10 Cts. TW in White Gold and post & clip backs. \$548.00/pr.



I

Lapis Lazuli Jewelry

A #SC-ERLP-261

14Kt. Yellow Gold earrings with 6x8mm oval Lapis Lazuli cabs, sixteen round Diamonds of .09 Cts. TW set in White Gold and post & clip backs.
\$475.00/pr.



B #SC-ERLP-550

14Kt. Yellow Gold earrings with 10x12mm oval Lapis Lazuli cabs, ten round Diamonds of .07 Cts. TW set in White Gold and post & clip backs.
\$340.00/pr.

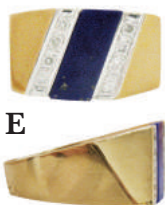


C #SC-ERLO-599

14Kt. Yellow Gold ladybug earrings with four Lapis Lazuli cabs inlaid with twelve Mother of Pearl flat top cabs, round Diamonds of .11 Cts. TW and post & clip backs.
\$550.00/pr.

D #SC-ERLP-586

14Kt. Yellow Gold ladybug earrings with four Lapis Lazuli cabs inlaid with four Mother of Pearl flat top cabs, Ruby eyes of .06 Cts. TW, round Diamonds of .04 Cts. TW set in White Gold and post backs.
\$418.00/pr.



E #12504

14Kt. Yellow Gold ring with Lapis Lazuli and eight round Diamonds of .11 Cts. TW set in White Gold. Size 6 3/4.
\$380.00

F #SC-PTLP-0988-X1

14Kt. White Gold pendant with 12x16mm oval Lapis Lazuli cab, round Diamond of .02 Cts. and fluted trim.
\$225.00



G #SC-PTLP-0991-X1

14Kt. White Gold pendant with 12x16mm oval Lapis Lazuli cab and round Diamond of .02 Cts.
\$294.00



H #SC-SLLP-41-X1

14Kt. Yellow Gold slide pendant with three curved Lapis Lazuli cabs and thirty-two round Diamonds of .17 Cts. TW set in White Gold.
\$475.00

I #SC-PTLP-0043-X1

14Kt. White Gold pendant with 16mm round Lapis Lazuli cab and round Diamond of .01 Cts.
\$232.00



J #SC-PTLP-0990-X1

14Kt. White Gold pendant with 14.5mm round Lapis Lazuli cab and round Diamond of .02 Cts.
\$312.00

Lapis Lazuli Jewelry

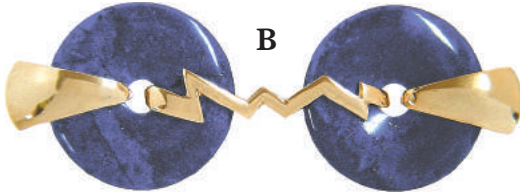
A #MMO-805521

14Kt. White Gold earrings with 8x12mm pear shape Lapis Lazuli cabs and post backs.

\$265.00/pr.



Smaller than actual size.



B #GSJ-2423

18Kt. Yellow Gold brooch with two 2.65" donut shape Lapis Lazuli.

\$800.00

C #SC-ENLP-139-S1

14Kt. Yellow Gold pendant/enhancer with 45mm disc Lapis Lazuli and Chinese character center.

\$500.00



D



E



F

D #17112

14Kt. Yellow Gold ring with 13x18mm oval Lapis Lazuli cab and rope trim. Size 7.

\$460.00

E #17111

14Kt. White Gold ring with 12x16mm oval Lapis Lazuli cab. Size 7.

\$389.00

F #12198

14Kt. White Gold ring with 9mm square, flat top Lapis Lazuli flat top. Size 4.

\$425.00

G #15480

14Kt. Yellow Gold ring with fluted Lapis Lazuli cab. Available in size 6 or 7.

\$297.00



H #MS-949

Approx. 7 1/4"x8 1/4"x1 3/4" Lapis Lazuli specimen on wooden stand. 6.67 lbs.

\$40.00



Pink Sapphire Jewelry



A

A #17332

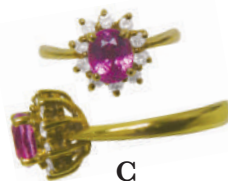
18Kt. Yellow Gold ring with 6x4.7mm oval Vietnamese Pink Sapphire of .97 Cts., ten round Diamonds of .31 Cts. TW and fourteen tapered baguette Diamonds of .21 Cts. TW. Size 6 1/2. \$4,250.00



B

B #15504

18Kt. Yellow Gold ring with 5x6.5mm oval Pink Sapphire of 1.20 Cts., twelve tapered baguette Diamonds of .75 Cts. TW and four round Diamonds of .18 Cts. TW. Size 7 1/2. \$3,500.00



C

C #14898

18Kt. Yellow Gold ring with 5.3x6.5mm oval Pink Sapphire of 1.40 Cts. and ten round Diamonds of .26 Cts. TW. Size 6 1/4. \$1,900.00



D

D #16527

18Kt. Yellow Gold ring with 5.4mm round Pink Sapphire of .92 Cts. and six princess cut Diamonds of .34 Cts. TW. Size 7. \$1,800.00

E



F



E #NF-A125-1

18Kt. Yellow Gold heart pendant/enhancer with round Pink Sapphires of .55 Cts. TW and four round Diamonds of .12 Cts. TW. \$869.00



G

F #NF-A089QU02

10mm round 18Kt. Pink Gold earrings with round Pink Sapphires of 1.00 Ct. TW and post backs. \$1,000.00/pr.

G #15548

18Kt. Yellow Gold ring with round Pink Sapphires of 1.85 Cts. TW and round Diamonds of .18 Cts. TW. Size 7. \$1,575.00



H

H #15838

18Kt. Yellow Gold ring with 4.6x6.4mm oval Vietnamese Pink Sapphire of .76 Cts. and six round Diamonds of .26 Cts. TW. Size 7. \$1,200.00

I #16909

18Kt. White Gold ring with five round Pink Sapphires of .52 Cts. TW and sixteen round Diamonds of .42 Cts. TW. Size 7. \$1,000.00



I

J #15634

14Kt. White Gold ring with 3.1mm round Pink Sapphire of .15 Cts. and sixteen round Diamonds of .43 Cts. TW. Size 7. \$595.00



J

Pink Sapphire Jewelry

A #16038

14Kt. Yellow Gold ring with 5.2x5.4mm oval Ceylon Pink Sapphire of .81 Cts. set in White Gold. Size 5 1/2.



A

\$850.00

B #16862

14Kt. Yellow Gold ring with 5.6x6.8mm oval Pink Sapphire of .96 Cts. and ten round Diamonds of .05 Cts. TW set in White Gold. Size 6 3/4.



B

\$375.00



C #17293

14Kt. White Gold band ring with six round Pink Sapphires of .25 Cts. TW and five round Diamonds of .15 Cts. TW. Size 4 3/4.

\$800.00



C

D #15796

18Kt. White Gold band ring with three 2x4mm marquise Pink Sapphires of .32 Cts. TW and four round Diamonds of .20 Cts. TW. Size 6 1/2.

\$382.00



D

E #16403

14Kt. White Gold band ring with three 3mm round Pink Sapphires of .35 Cts. TW and four 2x3mm baguette Diamonds of .20 Cts. TW. Size 7.

\$575.00



E

F #TGD-SA-17

14Kt. Yellow Gold heart shape slide pendant with eighteen round Pink Sapphires of 1.20 Cts. TW set in White Gold. \$600.00



F

G #SC-PTSP-0247-V1-Y

14Kt. Yellow Gold heart shape pendant with eight 2mm round Pink Sapphires of .31 Cts. TW and eight round Diamonds of .25 Cts. TW. \$490.00



G

H

H #SC-PTSP-0247-V1-W

14Kt. White Gold heart shape pendant with eight 2mm round Pink Sapphires of .30 Cts. TW and eight 2mm round Diamonds of .25 Cts. TW. \$490.00



I

I #SC-ERSP-1067-P1

14Kt. White Gold earrings with 4mm heart shape Pink Sapphires of .60 Cts. TW, thirty-four round Diamonds of .26 Cts. TW and post backs. \$630.00/pr.



J #SC-NLSP-0419-X1

17" 18Kt. White Gold necklace with 4x6mm pear shape Pink Sapphire of .40 Cts., four round Diamonds of .10 Cts. TW and spring ring clasp. \$946.00



J

Your satisfaction is guaranteed.

Sterling Estate Jewelry Specials

Special prices expire **September 30, 2018.**



A #SY-409-5 ESTATE PIECE

34.5" Sterling Silver Button Style bead necklace with 10mm beads. 121.60 grams TW and hook clasp.

Reg. \$369.00 **SPECIAL \$250.00**

B #SY-070310-2 ESTATE PIECE

22.5" Sterling Silver Squash Blossom necklace of 127.50 grams TW with 12mm two-part Sterling Silver beads, 2.25" x 2" naja with 10x14mm fancy shape Turquoise cab and dangle & hook clasp.

Reg. \$500.00 **SPECIAL \$425.00**

C #SY-145-6Q ESTATE PIECE

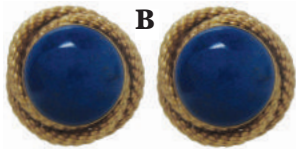
Nadia quartz watch with 1 5/8" wide Sterling Silver cuff with inlaid Coral and Turquoise. 86.48 grams TW. 2 7/8" inside diameter.

Reg. \$425.00 **SPECIAL \$350.00**

ESTATE JEWELRY

A #EST-1310

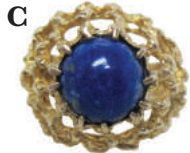
ESTATE PIECE - 7" 14Kt. White Gold Elgin watch with suede band. \$500.00



B

B #EST-1669

ESTATE PIECE - 14Kt. Yellow Gold earrings with 12mm round Lapis Lazuli cabs and post backs. \$200.00/pr.



C

C #17374

ESTATE PIECE - 14Kt. Yellow Gold ring with 10mm round Lapis Lazuli cab of 4.12 cts. TW. Size 5 1/2. \$400.00



D #DIA-PD-100

ESTATE PIECE - 14Kt. Yellow Gold pendant with three round brilliant cut Diamonds (H-J/SI1-2) of est. .50 cts. TW. \$500.00

D



E #EST-1670

ESTATE PIECE - 14Kt. Yellow Gold earrings with ten approx. 5x9mm marquise Opals and post backs. \$200.00/pr.



E

F #EST-1670

ESTATE PIECE - 14Kt. Yellow Gold earrings with ten approx. 5x9mm marquise Opals and post backs. \$200.00/pr.



H #17364

ESTATE PIECE - 14Kt. Yellow & White Gold ring with three princess cut diamonds (H-J/SI2-I1) of est. .75 cts. TW. Size 7. \$600.00

F

G #17050

ESTATE PIECE - 14Kt. Yellow Gold lady's ring with oval Diamond (G-H/I1) of .72 Cts. set in White Gold. Size 6 1/4. \$1,400.00



G

H #17178

ESTATE PIECE - 14Kt. White & Yellow Gold band ring with five princess cut Diamonds (G-H/SI2-I1) of .75 Cts. TW. Size 6. \$650.00



H



I

I #DIA-EST-200

ESTATE PIECE - 14Kt. Yellow Gold pendant with seven round Diamonds (K-L/SI2-I1) of .35 cts. TW. \$200.00



J

J #17362

ESTATE PIECE - 14Kt. Yellow Gold filigree scroll ring with 20x15mm oval Swiss Blue Topaz of approx. 20.00 cts. TW. Size 5. \$700.00

K #SY-031910-14

ESTATE PIECE - 14Kt. Yellow Gold earrings with 4x6mm octagon Oregon Red Sunstones of .91 cts. TW, six round Diamonds (H-J/I1-2) of .15 cts. TW and post backs. \$500.00/pr.



K

Fancy Sapphire Jewelry

A



A #17337

18Kt. Yellow Gold ring with 6x7.2mm oval Purple Sapphire of 1.69 Cts. and fourteen round Diamonds of .59 Cts. TW. Size 6 3/4.

\$3,214.00

B #RON-627

14Kt. Yellow & White Gold pendant with 3.8x3.9mm square Fancy reddish-orange Sapphire of .45 Cts.

\$325.00



C



D



E

C #17338

18Kt. Yellow Gold ring with 6.5mm round Fancy reddish-pink Sapphire of 1.75 Cts. set in White Gold and ten round Diamonds of .70 Cts. TW. Size 7.

\$6,294.00

D #11390

14Kt. Yellow Gold ring with 7x9mm pear shape Fancy reddish-orange Sapphire of 1.69 Cts. set in White Gold and sixteen round Diamonds of .91 Cts. TW. Size 6 3/4.

\$5,300.00

E #15869

14Kt. Yellow Gold ring with 4.6x9.3mm marquise Fancy reddish-orange Sapphire of .89 Cts. and two trillion Diamonds of .51 Cts. TW. Size 6.

\$3,000.00



F



G



H

F #12530

14Kt. Yellow Gold ring with 5x7mm oval Fancy reddish-orange Sapphire of .91 Cts. and four round Diamonds of .08 Cts. TW. Size 6 3/4.

\$2,100.00

G #16648

14Kt. Yellow Gold ring with 5.3x7.7mm pear shape Fancy brownish red/orange Sapphire of 1.07 Cts. set in White Gold. Size 6.

\$1,400.00

H #16490

14Kt. Yellow Gold ring with 5.2mm round Fancy reddish-orange Sapphire of .66 Cts. Size 6.

\$819.00

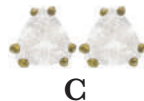
Fancy Sapphire Jewelry



A #15976
18Kt. Yellow Gold and Platinum ring with 6.6mm round Colorless Sapphire of 1.29 Cts. Size 5. \$1,350.00



B #16649
14Kt. Yellow Gold ring with 5.4x8.6mm pearshape Colorless Sapphire of 1.37 Cts. set in White Gold. Size 6. \$359.00



C



D



E

C #NS-199-Y
14Kt. Yellow Gold earrings with 6mm trillion Colorless Sapphires of 1.64 Cts. TW and post backs. \$300.00/pr.

D #CSJ-2226
14Kt. Yellow Gold earrings with 4mm round Colorless Sapphires of .59 Cts. TW and post backs. \$79.00/pr.

E #HOOCSP-101
14Kt. Yellow Gold pendant with 6x8mm oval Colorless Sapphire of 1.36 Cts. \$250.00

F #SC-ERSY-516-P1
18Kt. White Gold earrings with 2mm round Yellow Sapphires of .09 Cts. TW, sixteen round Diamonds of .14 Cts. TW and post backs. \$225.00/pr.



F



H



G

G #TAR-TE378YYS
18Kt. Yellow Gold hinged hoop earrings with eighty-four round Yellow Sapphires of 1.04 Cts. TW and snap posts. \$550.00/pr.

H #SC-ERSY-0508-P1
18Kt. White Gold earrings with twelve 2mm round Yellow Sapphires of 1.17 Cts. TW, fourteen round Diamonds of .20 Cts. TW and post backs. \$615.00/pr.

I #TBM-CO1580
18long 18Kt. White Gold necklace with round Yellow Sapphires of .35 Cts. TW, round Diamonds of .28 Cts. TW and spring ring clasp. \$489.00



I

J #BK-YB850
7.5" 14Kt. Yellow Gold bracelet with nine 5x7mm oval Yellow Sapphires of 8.50 Cts. TW, eighteen round Diamonds of .75 Cts. TW and slide clasp with safety. \$2,900.00



Golden Sapphire Jewelry



A



A #15228

18Kt. Yellow Gold ring with 8x10mm oval Golden Sapphire of 4.12 Cts. and twelve round Diamonds of .45 Cts. TW. Size 6 1/4.

\$5,500.00



B



B #16314

14Kt. Yellow Gold ring with 7.7mm round Golden Sapphire of 2.17 Cts. set in White Gold. Size 6.

\$2,300.00

C



D



C #15858

18Kt. Yellow Gold ring with three 2x4mm emerald cut Golden Sapphires of .48 Cts. TW and four round Diamonds of .20 Cts. TW. Size 7.

\$700.00

D #16631

14Kt. Yellow Gold ring with 4.6x9.1mm marquise Golden Sapphire of .96 Cts. set in White Gold. Size 6.

\$600.00



E

E #WP-1391

14Kt. White Gold pendant with 8.3x10.8mm cushion Golden Sapphire of 4.34 Cts. and thirty-eight round Diamonds of .50 Cts. TW.

\$4,975.00



F

F #GS-HT-2900

14Kt. Yellow Gold pendant with 9.1x10mm heart shape Golden Sapphire of 3.19 Cts. and sixteen round Diamonds of .72 Cts. TW.

\$2,900.00



G

G #BKP-45117

18Kt. White Gold pendant with 6.4x7.7mm cushion Golden Sapphire of 1.82 Cts. and twenty-four round Diamonds of .21 Cts. TW.

\$2,200.00



H

H #BKP-102332

18Kt. White Gold pendant with 7.7x8.2mm heart shape Golden Sapphire of 2.51 Cts. and thirty round Diamonds of .22 Cts. TW.

\$1,685.00

Spectacular SAPPHIRE SALE

Purchase 1 Sapphire on pages 21-28
 Purchase 2 Sapphires on pages 21-28
 Purchase 3 Sapphires on pages 21-28
 Purchase 4 or more Sapphires on pages 21-28

Receive a **20%** discount
 Receive a **30%** discount
 Receive a **40%** discount
 Receive a **50%** discount

BLUE SAPPHIRE



Ceylon Blue Sapphire

1.41 Cts.
 5.9x6.7mm oval
 Reg. \$2,500.00/Ct.
\$3,525.00



Ceylon Blue Sapphire

1.60 Cts.
 5.5x7mm oval
 Reg. \$5,500.00/Ct.
\$8,800.00



Thai Blue Sapphire

1.74 Cts.
 6.3x8.9mm pear
 Reg. \$1,500.00/Ct.
\$2,610.00



Ceylon Blue Sapphire

1.80 Cts.
 6.5x8.7mm pear
 Reg. \$4,000.00/Ct.
\$7,200.00



Thai Blue Sapphire

1.85 Cts.
 6.2x7.3mm oval
 Reg. \$2,000.00/Ct.
\$3,700.00



Thai Blue Sapphire

1.90 Cts.
 6.4x6.9mm oval
 Reg. \$2,500.00/Ct.
\$4,750.00



Thai Blue Sapphire

1.93 Cts.
 6.3x8.4mm pear
 Reg. \$3,000.00/Ct.
\$5,790.00



Ceylon Blue Sapphire

1.96 Cts.
 6.3x8.8mm pear
 Reg. \$4,500.00/Ct.
\$8,820.00



Ceylon Blue Sapphire

1.99 Cts.
 5.9x8.9mm oval
 Reg. \$4,000.00/Ct.
\$7,960.00



Ceylon Blue Sapphire

2.00 Cts.
 6.8x7.2mm octagon
 Reg. \$3,000.00/Ct.
\$6,000.00



Ceylon Blue Sapphire

2.03 Cts.
 7.9x5.5mm octagon
 Reg. \$3,500.00/Ct.
\$7,105.00



Ceylon Blue Sapphire

2.04 Cts.
 6.4x8.3mm pear
 Reg. \$4,000.00/Ct.
\$8,160.00



Thai Blue Sapphire

2.38 Cts.
 6.9x9.5mm oval
 Reg. \$1,500.00/Ct.
\$3,570.00



Thai Blue Sapphire

2.40 Cts.
 7.7x9.5mm pear
 Reg. \$2,000.00/Ct.
\$4,800.00

Discounts expire September 30, 2018

Spectacular SAPPHIRE SALE

BLUE SAPPHIRE



Ceylon Blue Sapphire

2.40 Cts.
5.4x10.8mm marquise
Reg. \$4,500.00/Ct.
\$10,800.00



Thai Blue Sapphire

2.40 Cts.
6.6x9.3mm oval
Reg. \$2,500.00/Ct.
\$6,000.00



Thai Blue Sapphire

2.56 Cts.
7.7x12mm kite
Reg. \$750.00/Ct.
\$1,920.00



Cambodian Blue Sapphire

2.73 Cts.
7.9x8.8mm heart
Reg. \$1,500.00/Ct.
\$4,095.00



Thai Blue Sapphire

3.01 Cts.
6.9x10.4mm octagon
Reg. \$3,000.00/Ct.
\$9,030.00



Thai Blue Sapphire

4.55 Cts.
7.2x10.7mm octagon
Reg. \$1,500.00/Ct.
\$6,825.00

COLORLESS SAPPHIRE



Colorless Sapphire

3.55 Cts.
7.2x9.6mm oval
Reg. \$300.00/Ct.
\$1,065.00



Colorless Sapphire

3.46 Cts.
8.1x10.3mm oval
Reg. \$400.00/Ct.
\$1,384.00



Colorless Sapphire

4.19 Cts.
9.1x11.9mm pear
Reg. \$300.00/Ct.
\$1,257.00



Colorless Sapphire

4.57 Cts.
8.5mm square
Reg. \$350.00/Ct.
\$1,599.50



Colorless Sapphire

4.63 Cts.
9x11.4mm oval
Reg. \$400.00/Ct.
\$1,852.00



Colorless Sapphire

5.00 Cts.
7.6x11.5mm octagon
Reg. \$500.00/Ct.
\$2,500.00

Spectacular SAPPHIRE SALE

COLORLESS SAPPHIRE



Colorless Sapphire

5.87 Cts.
11.9mm round
Reg. \$600.00/Ct.
\$4,122.00



Colorless Sapphire

7.65 Cts.
10.4x14.2mm oval
Reg. \$400.00/Ct.
\$3,060.00



Colorless Sapphire

9.27 Cts.
10.4x12.8mm cushion
Reg. \$375.00/Ct.
\$3,476.25

COLOR CHANGE SAPPHIRE



Color Change Sapphire

(blue to purple)

1.06 Cts.
4.1x9.3mm marquise
Reg. \$500.00/Ct.
\$530.00



Color Change Sapphire

(blue to purple)

1.28 Cts.
5.8x7.5mm shield
Reg. \$500.00/Ct.
\$640.00



Color Change Sapphire

(blue to violet)

1.82 Cts.
6x8.1mm pear
Reg. \$800.00/Ct.
\$1,456.00



Color Change Sapphire

(violet to lavender)

2.12 Cts.
5.7x11.4mm marquise
Reg. \$500.00/Ct.
\$1,060.00



Color Change Sapphire

(gray/blue to lavender/pink)

3.73 Cts.
8.2x10.1mm oval
Reg. \$1,500.00/Ct.
\$5,595.00



Color Change Sapphire

(blue to violet)

4.07 Cts.
9mm round
Reg. \$2,000.00/Ct.
\$8,140.00



Color Change Sapphire

(blue to purple)

4.10 Cts.
7.6x12.5mm pear
Reg. \$1,000.00/Ct.
\$4,100.00



Color Change Sapphire

(has GIA report)

5.19 Cts.
10x11.45mm heart
Reg. \$5,000.00/Ct.
\$25,950.00

Sign up for email specials at
www.houseofonyx.com/signup.aspx

Spectacular SAPPHIRE SALE

FANCY SAPPHIRE



Fancy Sapphire
(brownish red/orange)

1.66 Cts.
4.8x8.2mm octagon
Reg. \$5,000.00/Ct.
\$8,300.00



Fancy Sapphire
(reddish-orange)

1.74 Cts.
6.2x9mm pear
Reg. \$4,500.00/Ct.
\$7,830.00



Fancy Sapphire
(brownish red/orange)

1.76 Cts.
6.2x7.7mm oval
Reg. \$3,000.00/Ct.
\$5,280.00



Fancy Sapphire
(red/orange)

1.86 Cts.
5.5x8.8mm oval
Reg. \$6,000.00/Ct.
\$11,160.00



Fancy Sapphire
(brownish-orange)

1.92 Cts.
8.4x8.4x8.5mm trillion
Reg. \$750.00/Ct.
\$1,440.00



Fancy Sapphire
(brownish red/orange)

2.26 Cts.
6.4x7.9mm octagon
Reg. \$2,500.00/Ct.
\$5,650.00



Fancy Sapphire
(brownish-orange)

2.55 Cts.
9.1x9.2mm trillion
Reg. \$800.00/Ct.
\$2,040.00



Fancy Sapphire
(orange)

5.45 Cts.
9.6x12.3mm oval
Reg. \$1,000.00/Ct.
\$5,450.00



Fancy Sapphire
(brownish red/orange)

5.61 Cts.
13.54x8.58x6.43mm pear
Reg. \$6,000.00/Ct.
\$33,660.00

with
GIA report



Fancy Sapphire
(brownish-purple)

2.12 Cts.
6.9x8.7mm oval
Reg. \$450.00/Ct.
\$954.00



Fancy Sapphire
(yellowish-green)

3.55 Cts.
8.7mm round
Reg. \$300.00/Ct.
\$1,065.00



Fancy Sapphire
(light yellow)

7.92 Cts.
9.6x11.6mm oval
Reg. \$250.00/Ct.
\$1,980.00

Spectacular SAPPHIRE SALE

FANCY SAPPHIRE



Fancy Sapphire
(bluish-gray)

1.83 Cts.
6.5x8.3mm oval
Reg. \$800.00/Ct.
\$1,464.00



Fancy Sapphire
(blue/green)

1.99 Cts.
6.6x7.9mm oval
Reg. \$800.00/Ct.
\$1,592.00



Fancy Sapphire
(pale blue)

2.07 Cts.
7.2x8.3mm pear
Reg. \$125.00/Ct.
\$258.75



Fancy Sapphire
(pale blue)

3.65 Cts.
7.6x9.7mm oval
Reg. \$200.00/Ct.
\$730.00



Fancy Sapphire
(pale blue)

6.26 Cts.
7.2x11.8mm oval
Reg. \$250.00/Ct.
\$1,565.00



Fancy Sapphire
(pale blue)

6.62 Cts.
9.7x11.8mm oval
Reg. \$250.00/Ct.
\$1,655.00

GOLDEN SAPPHIRE



Golden Sapphire

1.82 Cts.
8.2x7.1mm heart
Reg. \$750.00/Ct.
\$1,365.00



Golden Sapphire

1.86 Cts.
7.8x6.1mm oval
Reg. \$750.00/Ct.
\$1,395.00



Golden Sapphire

2.91 Cts.
7.5x9.9x9.9mm trillion
Reg. \$750.00/Ct.
\$2,182.50



Golden Sapphire

3.14 Cts.
6.3x14.3mm marquise
Reg. \$750.00/Ct.
\$2,355.00



Golden Sapphire

3.14 Cts.
8.4mm round
Reg. \$750.00/Ct.
\$2,355.00



Golden Sapphire

3.69 Cts.
9.8x7.8mm pear
Reg. \$750.00/Ct.
\$2,767.50

Your satisfaction is guaranteed.

Spectacular SAPPHIRE SALE

GOLDEN SAPPHIRE



Golden Sapphire

10.10 Cts.

9.18x11.88mm octagon

Reg. \$1,300.00/Ct.

\$13,130.00



Golden Sapphire

11.92 Cts.

12.5x14.3mm cushion

\$10,000.00



Golden Sapphire

13.82 Cts.

11.9x14.5mm oval

Reg. \$1,000.00/Ct.

\$13,820.00

GREEN SAPPHIRE



Green Sapphire

2.84 Cts.

8.5x9.7mm oval

Reg. \$200.00/Ct.

\$568.00



Green Sapphire

3.33 Cts.

8.4x10mm oval

Reg. \$300.00/Ct.

\$999.00



Green Sapphire

3.37 Cts.

8.9x9.2mm heart

Reg. \$250.00/Ct.

\$842.50



Green Sapphire

3.72 Cts.

9.1x10.5mm oval

Reg. \$400.00/Ct.

\$1,488.00



Green Sapphire

4.51 Cts.

7.4x10.2mm octagon

Reg. \$100.00/Ct.

\$451.00



Green Sapphire

4.97 Cts.

11mm round

Reg. \$250.00/Ct.

\$1,242.50



Green Sapphire

5.30 Cts.

9.2x11.5mm oval

Reg. \$300.00/Ct.

\$1,590.00



Green Sapphire

5.88 Cts.

9.6x13.1mm cushion

Reg. \$250.00/Ct.

\$1,470.00



Green Sapphire

10.01 Cts.

11.78x14.68mm oval

Reg. \$300.00/Ct.

\$3,003.00

Spectacular SAPPHIRE SALE

PURPLE SAPPHIRE



Violet Purple Sapphire

1.53 Cts.
5.7x8.3mm pear
Reg. \$1,000.00/Ct.
\$1,530.00



Purple Sapphire

1.55 Cts.
5.9x7.4mm oval
Reg. \$1,000.00/Ct.
\$1,550.00



Reddish Purple Sapphire

1.65 Cts.
5.2x9.6mm marquise
Reg. \$1,000.00/Ct.
\$1,650.00



Purple Sapphire

1.69 Cts.
5.8x9.3mm pear
Reg. \$1,000.00/Ct.
\$1,690.00



Purple Sapphire

1.76 Cts.
6.2x7.9mm oval
Reg. \$1,600.00/Ct.
\$2,816.00



Violet Purple Sapphire

1.77 Cts.
6.5x7.6mm oval
Reg. \$1,000.00/Ct.
\$1,770.00



Purple Sapphire

1.84 Cts.
6.2x8.1mm oval
Reg. \$1,500.00/Ct.
\$2,760.00



Purple Sapphire

1.96 Cts.
6.9x10.5mm pear
Reg. \$750.00/Ct.
\$1,470.00



Purple Sapphire

2.22 Cts.
6.2x8.4mm oval
Reg. \$1,000.00/Ct.
\$2,220.00

PINK SAPPHIRE



Pink Sapphire

1.24 Cts.
4.6x8.6mm marquise
Reg. \$1,000.00/Ct.
\$1,240.00



Pink Sapphire

1.50 Cts.
6.3x7.1mm pear
Reg. \$1,000.00/Ct.
\$1,500.00



Pink Sapphire

1.64 Cts.
7.6x5.3mm oval
Reg. \$2,500.00/Ct.
\$4,100.00

Spectacular SAPPHIRE SALE

PINK SAPPHIRE



Pink Sapphire
1.78 Cts.
6.3x7.3mm marquise
Reg. \$750.00/Ct.
\$1,335.00



Pink Sapphire
1.91 Cts.
5.8x7.8mm oval
Reg. \$3,000.00/Ct.
\$5,730.00



Pink Sapphire
2.32 Cts.
7.2x8mm oval
Reg. \$2,500.00/Ct.
\$5,800.00



Pink Sapphire
2.33 Cts.
7.2x8.4mm pear
Reg. \$2,500.00/Ct.
\$5,825.00



Pink Sapphire
3.20 Cts.
10.1x6.1mm cushion
Reg. \$2,000.00/Ct.
\$6,400.00



Pink Sapphire
3.30 Cts.
7.1x10.7mm oval
Reg. \$3,000.00/Ct.
\$9,900.00



Pink Sapphire
6.16 Cts.
9.5x10.7mm oval
Reg. \$1,800.00/Ct.
\$11,088.00

**PURCHASE 1 SAPPHIRE ON PAGES 21-28
RECEIVE A 20% DISCOUNT**

**PURCHASE 2 SAPPHIRES ON PAGES 21-28
RECEIVE A 30% DISCOUNT**

**PURCHASE 3 SAPPHIRES ON PAGES 21-28
RECEIVE A 40% DISCOUNT**

**PURCHASE 4 OR MORE SAPPHIRES ON PAGES 21-28
RECEIVE A 50% DISCOUNT**

DISCOUNTS EXPIRE SEPTEMBER 30, 2018

Rainbow Sapphire Jewelry



A #RNC-9881-4

7" Platinum bracelet of 24.08 grams with fifty-seven 3mm princess cut Multi-Color Sapphires of 11.06 Cts. TW and slide clasp with safety. 26.95 grams TW. \$12,325.00

B #CSJ-1034

7" 18Kt. Yellow Gold bracelet with seventy-six 2.5mm princess cut Pink, Golden, Colorless, Blue and Orange Sapphires & Rubies of 6.28 Cts. TW and slide clasp with safety. Bracelet is 16.96 grams TW. \$8,000.00

C #SC-BLPS-0238-X1

7.25" 14Kt. White Gold bracelet with 3mm round Pink, Blue and Golden Sapphires of 1.72 Cts. TW, 377 round Diamonds of 1.88 Cts. TW and slide clasp with safety. \$3,900.00



D #CSJ-1009

7" 14Kt. Yellow Gold bracelet of 17.30 grams with thirty-five 3.7mm round Blue, Green, Golden, Pink & Colorless Sapphires of 8.19 Cts. TW and slide clasp with safety. \$2,500.00

E #JM-633

7" 14Kt. Yellow Gold bracelet of 14.50 grams with forty-two 3.3mm round Pink, Yellow, Blue, Purple & Green Sapphires of 7.33 Cts. TW and slide clasp. \$2,000.00

F #JM-630

7" 14Kt. Yellow Gold bracelet of 17.60 grams with twenty-nine 3.6mm round Pink, Colorless, Yellow, Green, Purple & Blue Sapphires of 6.55 Cts. TW and slide clasp with side safety. \$2,000.00

G #CSJ-1033

7" 14Kt. Yellow Gold bracelet of 10.78 grams with thirty-four 3x4mm oval Pink, Yellow, Colorless, Blue, Green & Purple Sapphires of 7.31 Cts. TW and slide clasp with side safety. \$2,000.00

NEW STERLING SILVER JEWELRY



A #SS-2365

Handcrafted Indiri Collection Sterling Silver ring with 10mm round Turquoise cab. Sizes 7, 8 and 9.

\$72.00

B#SS-2366

Handcrafted Indiri Collection Sterling Silver bali pendant with 14mm round Turquoise cab.

\$76.00



B

C #SS-2367

Handcrafted Indiri Collection Sterling Silver bali earrings with 10mm round Turquoise cabs and shepherd's hooks.

\$85.00/pr.



C

D

D #SS-2368

Handcrafted Indiri Collection Sterling Silver bali earrings with 12mm round Turquoise cabs and shepherd's hooks.

\$108.00/pr.



E

E #SS-2364

6.5" - 7.75" Handcrafted Indiri Collection Sterling Silver Bali bracelet with seven 10mm round Turquoise cabs and lobster claw clasp.

\$292.00



F

F #SBC-55655R-SLSBTQ-8

Samuel B. Collection Sterling Silver ring with 10x14mm oval Sleeping Beauty Turquoise cab. Size 8.

\$270.00



G

G #SBC-57475E-SBTQ

Samuel B. Collection Sterling Silver & 18Kt. Yellow Gold earrings with 5x7mm oval Sleeping Beauty Turquoise cabs and shepherd's hooks.

\$100.00/pr.



H

H #SBC-55866R-SLSBTQ

Samuel B. Collection Sterling Silver ring with nine assorted shape Sleeping Beauty Mine Turquoise Cabs. Size 9.

\$220.00



I

I #SBC-55866R-SLM

Samuel B. Collection Sterling Silver Bali design ring with Amethyst, Blue Topaz, Peridot, Garnet, Iolite and Citrine. Size 9.

\$165.00



J

J #SBC-55307R-M

Samuel B. Collection Sterling Silver cross ring with assorted gemstones and 18Kt. Yellow Gold accents. Size 7.

\$235.00

COINS



A #SAC-SS-25-PL

Sterling Silver plain bezel pendant with U.S. one dollar 2000 Sacagawea coin.

\$25.00



B #MDP-B-10

Assorted date Mercury Dime in Sterling Silver plain bezel pendant. Dime is composed of .900 Silver and .100 copper. Great collectible item for coin enthusiasts!

\$10.00

C #SS-1444

Nickel-plated key chain with 2001 Kentucky State quarter.

\$19.00



D #SS-1459

Sterling Silver money clip with 2001 Kentucky State quarter.

\$32.00

E #FC-16-20

1 lb. TW. bag of mixed foreign coins. Includes FREE paper currency. Coins and currency vary.

\$20.00/lot

Item E shown smaller than actual size.

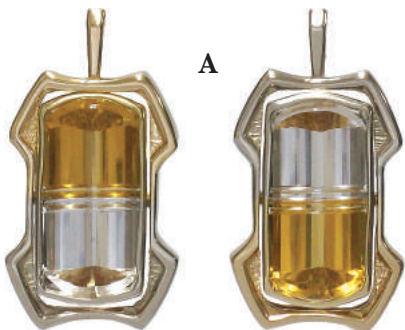


Call us toll-free at 1-800-844-3100.

Golden Citrine Jewelry

The Hourglass

By Ron R.



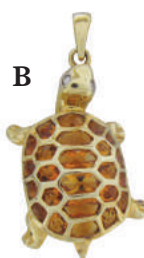
A

A #RR-HGP-1750

14Kt. Yellow Gold rotating pendant with approx. 12x25mm cushion Bi-Color Quartz (Clear Quartz and Golden Citrine) of 18.20 Cts. Total weight of pendant is 14.30 grams. \$1,750.00

B #D&R-22999-P

14Kt. Yellow Gold turtle pendant with twenty-four fancy cut Golden Citrines of 1.67 Cts. TW and two round Diamond eyes of .01 Cts. TW. \$575.00



B



C

C #D&R-22999-E

14Kt. Yellow Gold earrings with twenty fancy cut Golden Citrines of 1.19 Cts. TW, four round Diamond eyes of .01 Cts. TW and lever backs. \$550.00/pr.

D #D&R-18856

18Kt. Yellow Gold pendant with 8x10mm oval Golden Citrine of 2.87 Cts., two round Golden Citrines of .13 Cts. TW (on sides) and four round Diamonds of .04 Cts. TW set in White Gold. \$425.00



D



E



F

E #SC-PTFC-0767-X1

14Kt. Yellow Gold pendant with 8x10mm cushion Golden Citrine and five round Diamonds of .03 Cts. TW set in White Gold. \$375.00

F #SC-SLFC-02

14Kt. Yellow Gold pendant with 7x10mm pear shape Golden Citrine of 1.47 Cts. and round Diamonds of .03 Cts. TW. \$205.00



G



H

G #ARS-PD2775

14Kt. White Gold pendant with 6x9mm pear shape Golden Citrine and seventeen round Diamonds of .20 Cts. TW. \$490.00

H #TM-27590

14Kt. White Gold pendant with one each 6mm, 7mm and 8mm round Golden Citrine of 3.46 cts. TW. \$250.00



I



J

I #ARS-PD2328

14Kt. Yellow Gold pendant with 6mm trillion Golden Citrine of approx. 1.20 Cts. and round Diamond of .01 Ct. \$189.00

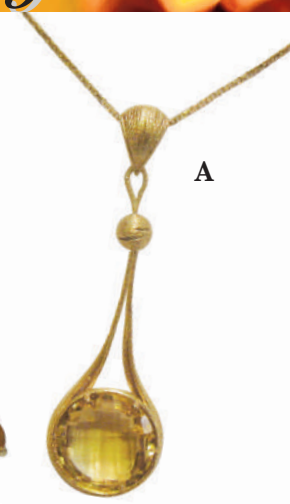
J #TM-30119

14Kt. White Gold pendant with 7x9mm oval Golden Citrine of approx. 1.60 Cts. \$140.00

Golden Citrine Jewelry

A #RC-PD1136-18

18" 14Kt. Yellow Gold necklace with checkerboard faceted 14mm round Golden Citrine and lobster claw clasp. \$485.00



A

B #AD-E-87-4593N

14Kt. Yellow Gold earrings with 5mm round Golden Citrines of 1.10 Cts. TW and lever backs. \$95.00/pr.



B



C



C #14411

14Kt. Yellow Gold ring with 5x7mm pear shape Golden Citrine of .65 Cts. and two round Diamonds of .04 Cts. TW set in White Gold. Size 6 1/2. \$160.00



D



E



F



G

D #17282

14Kt. Yellow Gold ring with 12x16mm oval Golden Citrine of approx. 10.00 Cts. and round Diamonds of .15 Cts. TW. Size 7. \$1,005.00

E #14873

14Kt. Yellow Gold ring with 9x11mm oval Golden Citrine cab of 4.82 Cts. and eighteen round Diamonds of .18 Cts. TW set in White Gold. Size 5 3/4. \$975.00

F #14847

14Kt. Yellow Gold ring with ten 4x5mm pear shape Golden Citrines of 2.12 Cts. TW and fifteen round Diamonds of .16 Cts. TW set in White Gold. Size 6 3/4. \$735.00

G #14864

14Kt. Yellow Gold band ring with four 5mm princess cut Golden Citrines of 2.35 Cts. TW. Size 7 1/4. \$300.00



H



H #15775

18Kt. White Gold ring with 6mm round buff top Golden Citrine of .86 Cts. and two 1.4mm princess cut Diamonds of .03 Cts. TW set in Yellow Gold (on sides). Size 7. \$325.00

Golden Citrine Jewelry



A

A #ARS-ER2328

14Kt. Yellow Gold earrings with 7mm trillion Golden Citrines, two round Diamonds of .02 Cts. TW and post backs. \$259.00/pr.



B

B #BK-GC-0811-27

14Kt. White Gold dangle earrings with 10x12mm lazer cut trillion Golden Citrines of 5.01 Cts. TW and lever backs. \$360.00/pr.



C

C SC-ERFC-0938-P1

14Kt. White Gold earrings with 5mm round Golden Citrines of .90 Cts. TW and post backs. \$143.00/pr.

D #SC-BRFC-43-X1

14Kt. Yellow Gold heart brooch with eighteen 3mm round Golden Citrines of 1.80 Cts. TW. \$175.00



D

E #17180

14Kt. White Gold ring with checkerboard faceted 7x9mm oval Golden Citrine of 1.70 Cts. & four round Diamonds of .10 Cts. TW. Size 6 3/4. \$335.00



E

F #17246

14Kt. White Gold ring with checkerboard faceted 12mm round Golden Citrine of 8.00 Cts. & round Diamonds of .33 Cts. TW. Size 6 3/4. \$1,045.00



F

Cross Pendants



G

G #LR-3021

14Kt. Yellow Gold cross pendant with twelve 3mm square Golden Citrines of approx. 1.55 Cts. TW. \$340.00



H

H #LR-9651

14Kt. Yellow Gold cross pendant with six tapered baguette and one pear shape Golden Citrines & four round Diamonds of .05 Cts. TW. \$285.00



I

I #DR-15347

14Kt. Yellow Gold cross pendant with eleven 3mm round Citrines of 1.16 Cts. TW. \$250.00

J #SC-PTFC-0997-S1

14Kt. Yellow Gold cross pendant with six 2mm round Golden Citrines of .19 Cts. TW. \$48.00



J

Estate Jewelry Specials

Special prices expire **September 30, 2018.**



A #17035 ESTATE PIECE

14Kt. White Gold ring with 5.38x5.33x3.98mm princess cut Diamond (H/SI2) of .99 Cts. set in Platinum. Size 5. Reg. \$3,600.00 **SPECIAL \$3,000.00**



B #17178 ESTATE PIECE

14Kt. White & Yellow Gold band ring with five princess cut Diamonds (G-H/SI2-I1) of .75 Cts. TW. Size 6. Reg. \$650.00 **SPECIAL \$550.00**

C #17321 ESTATE PIECE

14Kt. Yellow Gold band ring with ten round Diamonds of est. .40 Cts. TW. Size 6 1/2. Reg. \$300.00 **SPECIAL \$250.00**



D #17036 ESTATE PIECE

Platinum ring with 5x7mm octagon Ruby of 1.00 Ct. and two 5mm trillion Colorless Sapphires of .89 Cts. TW. Size 6. Reg. \$3,900.00 **SPECIAL \$3,000.00**

E #17315 ESTATE PIECE

14Kt. Yellow Gold ring with approx. 12.5x14mm octagonal Lapis Lazuli Cab. Size 8 1/2. Reg. \$500.00 **SPECIAL \$425.00**



F #EST-1397 ESTATE PIECE

7.5" 14Kt. Yellow Gold bracelet with twenty-three approx. 5mm round Garnet, Blue Topaz, Amethyst, Golden Citrine and Peridot and slide clasp with safety. Reg. \$500.00 **SPECIAL \$425.00**

G #EST-1641 ESTATE PIECE

14Kt. Yellow Gold pendant with Aquamarine briolette of 17.45 Cts. and thirteen round Blue Sapphires of est. 1.00 Ct. TW. Reg. \$3,450.00 **SPECIAL \$2,750.00**



H #AD-1028 ESTATE PIECE

7.5" 10Kt. Yellow Gold flower bracelet with seventy-eight pear shape Golden Citrines of 16.00 Cts. TW and slide clasp. Reg. \$800.00 **SPECIAL \$650.00**



View more of our Estate jewelry online at www.houseofonyx.com

60% OFF

CLOSEOUT Jewelry

60% OFF

60% off discounts expire **September 30, 2018.**



A

A #DG-N2050

16" 14Kt. Yellow Gold necklace of 10.18 grams with 5.5mm round Fancy reddish-orange Sapphire of .76 Cts., round Diamonds of .50 Cts. TW and hook & slide clasp.

Reg. \$3,000.00 **60%OFF \$1,200.00**

B #GSJ-2047

18Kt. Yellow Gold brooch/pendant enhancer with 13mm round Rhodolite Garnet of 12.03 Cts. and forty-six round Diamonds of 1.00 Ct. TW.

Reg. \$3,500.00 **60%OFF \$1,400.00**



B

C #LWJ-P1927

14Kt. Yellow Gold brooch with Rhodolite Garnet of 1.50 Cts., two pear shape Blue Sapphires of .60 Cts. TW, round Emerald of .25 Cts. and round Diamonds of .30 Cts. TW set in White Gold. 5.97 grams TW.

Reg. \$1,290.00 **60%OFF \$516.00**



C



D

D #15250

18Kt. Yellow Gold ring with 9x12mm oval Rhodolite Garnet of 6.86 Cts., two round Diamonds of .04 Cts. TW bezel set in White Gold and four round Rhodolite Garnets of .36 Cts. TW bezel set in the shank. Size 6 1/4.

Reg. \$1,595.00 **60%OFF \$638.00**

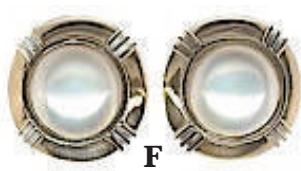
E #16453

14Kt. Yellow & White Gold ring with 9.5-10mm round natural pink and six approx. 4.5mm white Fresh Water Cultured Pearls and fifty-eight round Diamonds of .38 Cts. TW. Size 7.

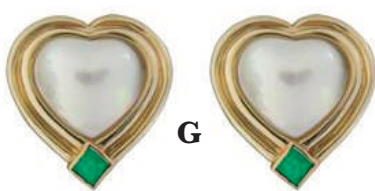
Reg. \$938.00 **60%OFF \$375.20**



E



F



G

F #AG-8P03

14Kt. Yellow & White Gold earrings of 13.96 grams with 12mm round Mabe Cultured Pearls and post & clip backs.

Reg. \$1,059.00/pr. **60%OFF \$423.60/pr.**

G #AP-8P25E

14Kt. Yellow Gold heart shape earrings with 13mm heart shape Mabe Cultured Pearls, 3mm square Emeralds of .50 Cts. TW and post & clip backs.

Reg. \$1,875.00/pr. **60%OFF \$750.00/pr.**

H #SC-TSEM-07

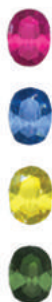
Set of four 14Kt. Yellow Gold shirt studs with four 3mm round Emerald cabs of .52 Cts. TW and forty-eight round Diamonds of .20 Cts. TW set in White Gold.

Reg. \$1,000.00 **60%OFF \$400.00**



H

CORUNDUM & EMERALD



Stones
enlarged
for detail.

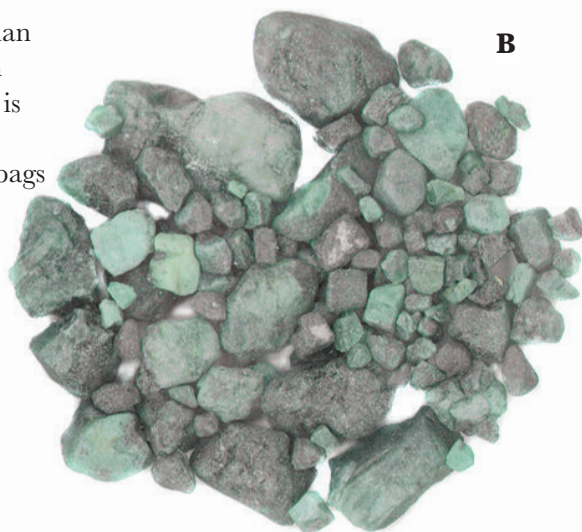
A Corundum 4-Piece Collector's Set
Our 4 piece Corundum Sets include one each Pink Sapphire, Blue Sapphire, Golden Sapphire and Green Sapphire of the same size and shape. The sets available are listed below and are currently on closeout at **LESS 50%**. This is a great chance to buy Sapphires for jewelry as solitaire or accent stones.

<u>Weight</u>	<u>Measurement & Shape</u>	<u>Regular Price</u>	<u>LESS 50%</u>
2.02 cts. TW	3.55x6.22mm marquise	\$505.00	\$252.50
1.80 cts. TW	4x5mm pear shape	\$450.00	\$225.00
1.69 cts. TW	3.9x5.3mm oval	\$422.50	\$211.25
1.62 cts. TW	3.7x4mm oval	\$405.00	\$202.50
1.61 cts. TW	3.5x5.3mm oval	\$402.50	\$201.25
1.61 cts. TW	3.6x4.6mm oval	\$402.50	\$201.25
1.54 cts. TW	3.7x4.8mm oval	\$385.00	\$192.50
1.46 cts. TW	3.5x5mm oval	\$365.00	\$182.50
1.46 cts. TW	3.4x4.9mm oval	\$365.00	\$182.50
1.39 cts. TW	3.3x4.6mm oval	\$347.50	\$173.75
1.36 cts. TW	3.1x4.6mm oval	\$340.00	\$170.00
1.25 cts. TW	3.5x4.3mm oval	\$312.50	\$156.25

B #BER-15

1 pound bag containing opaque Brazilian Emerald pieces of rough, ranging from .25" to 1+" in length. Each assortment is packaged in a transparent plastic bag.

\$15.00/bag or \$50.00/5 bags



C #WH-EM-100

Emerald closeout. Lot of 100 small faceted Emeralds in assorted shapes. Average weight of .08 cts. to .12 cts.

Reg. \$25.00 **Now \$20.00**

Items shown smaller than actual size.

BEADS



A

A #Z-171

Bag of assorted gemstone beads including Quartz of many colors, Fluorite, Turquoise, Lapis Lazuli and others. Various shapes may include nuggets, chips, rounds and discs. \$10.00/lot

B #MBA-1-20

One pound bag of drilled gemstone beads. Contains all shapes, sizes and colors. The 4"x6" plastic bag will contain an average of 260 gemstone beads. These beads are perfect for creating your own earring, bracelet or necklace designs. They are great for craft and sewing projects. \$20.00/lot



B



C

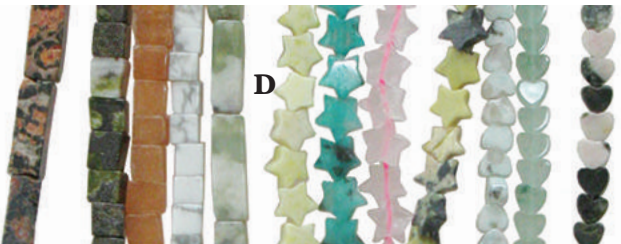
C #MX-SE-12-20

Lot of ten 16" temporary strands of assorted Green Serpentine & black stone beads. \$10.00/lot

D #AGB-12-30

Lot of twelve 16" temporary strands of fancy gemstone beads. Varied shapes, sizes and colors. You will receive a mixed assortment of our choice. \$30.00/lot

\$30.00/lot



D



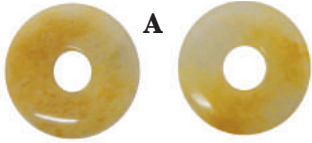
E

E #AGB-10-49

Lot of ten 16" temporary strands of assorted shapes and sizes of gemstone stone beads. \$49.00/lot

Items shown smaller than actual size.

DONUTS & BEADS

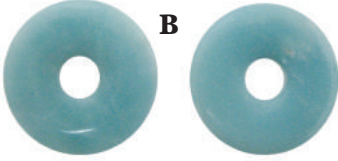


A

A #MI-787

25mm dyed yellow Quartz donut pair.

\$2.00/pr.



B

B #MBA-1-20

25mm Amazonite donut pair.

\$2.00/pr.

C #AGD-25-10

Lot of twenty-five 20-30mm assorted gemstone donuts. \$10.00/lot



C



D

D #Z-184

Lot of four Lapis Lazuli donut pairs. Sizes range from 8 -25mm.

\$10.00/lot



E #MI-717

35mm Lapis Lazuli donut.

\$3.00

F #MI-718

40mm Lapis Lazuli donut.

\$4.00



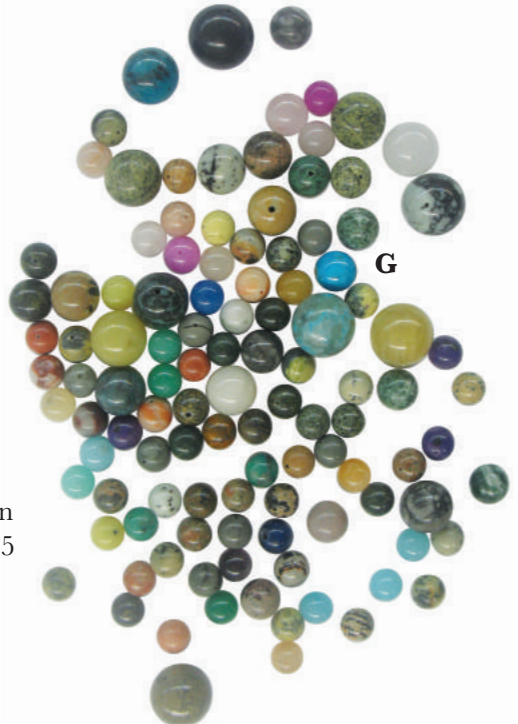
E



F

G #RBA-10-18-14

10-18mm fully-drilled round gemstone beads in assorted materials. Approx. 250 grams TW. 135 pieces. \$14.00/lot



G

Items shown smaller than actual size.

Visit our Crystal Gallery at
127 North Main Street, Greenville, KY 42345

TIGER'S EYE BEADS



A

A #DB-2995

23" necklace of 8mm, 10mm and 12mm round blue, red and golden Tiger's Eye beads with Gold-filled spring ring clasp. Knots between beads.

\$50.00



B

B #BRG-TE-BSB-15

8mm, 10mm & 12mm round blue, red & golden Tiger's Eye bead stretch bracelet. Fits 7"-8" wrist.

\$15.00

C #IGM-BTE-32

32" continuous necklace of 8mm round blue Tiger's Eye Beads. Knots between beads.

\$20.00



C

D #IGM-GTE-32

32" continuous necklace of 8mm round golden Tiger's Eye beads. Knots between beads.

\$20.00



D

E #IGM-RTE-32

32" continuous necklace of 8mm round red Tiger's Eye beads. Knots between beads.

\$20.00



E

SPECIAL LOT OFFERS

A



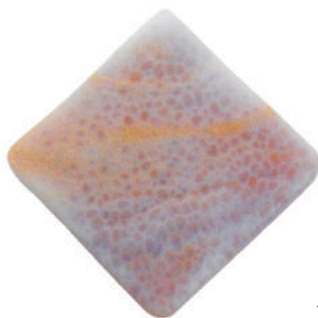
A #NPJ-PND-5-60

Lot of five assorted Nature's Paintbrush Jasper cab pendants set in Sterling Silver. Patterns vary and sizes range from 1 1/4" to over 2 1/2" long.
\$137.00 value. \$60.00/lot

B #AS-GP-15-4

Lot of four assorted drilled gemstone pendants. These are perfect for jewelry makers. Assorted shapes and gem materials. No two lots are the same. Sizes range from 30mm to 50mm.

\$15.00/lot



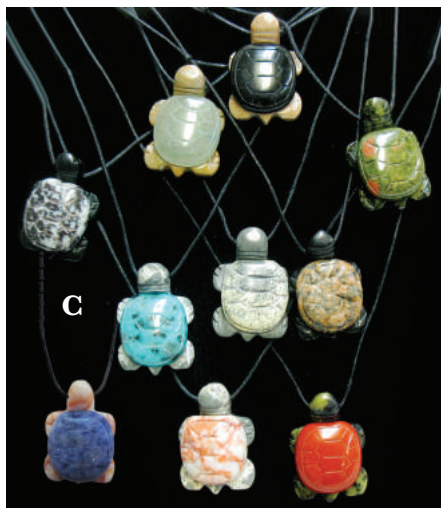
B



C #IGM-TPC-25

Lot of ten 1" assorted gemstone turtle pendants on 32" black cords.

Reg. \$25.00 **Now \$15.00**



C



D

D #IGM-AS-CHP-10

Lot of ten assorted gemstone chip bead stretch bracelets. Fits 7-8" wrist.

\$10.00

Items shown smaller than actual size.

Same day shipping available on most items.

GIFT IDEAS



A #BE-862
Glass & crystal bead stretch bracelet in assorted colors.
Fits 7"-8" wrist. \$6.00

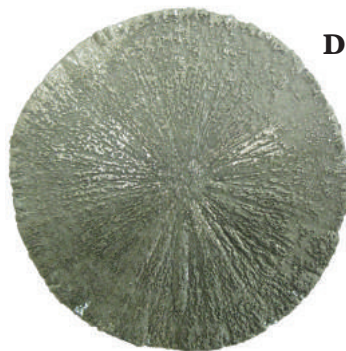


B #BE-579
35mm Ruby egg. Approx. 190.00 cts. Reg. \$225.00 **Now \$67.50**



C #MS-772
Approx. 2"x3" polished mussel shell. \$1.50

D #PY-SN-18
Approx. 2.75"-3" Pyrite Sun (Illinois, USA). \$18.00

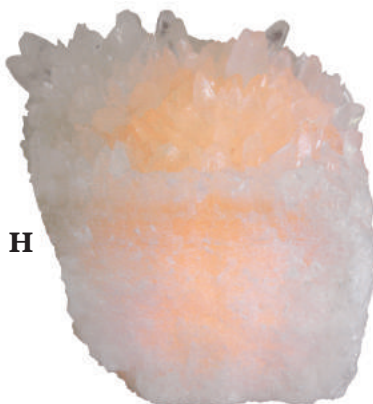


E #MI-792
Approx. 4.5"-5" Sandstone
sculpture (Utah). \$30.00



F #MS-1136
Quartz crystals (Corinto,
Minas Gerais, Brazil) on
1/2" wooden base.
\$10.00

G #MI-791
6.75" Rhyolite arrowhead.
\$25.00



H #MS-896
Approx. 5" x4"x 4.5" White Calcite night light of 5 lbs.
\$25.00

Items shown smaller than actual size.

MINERAL ROUGH

A



A #AMQ-RH-3

1 lb. bag of small Amethyst rough.

\$3.00

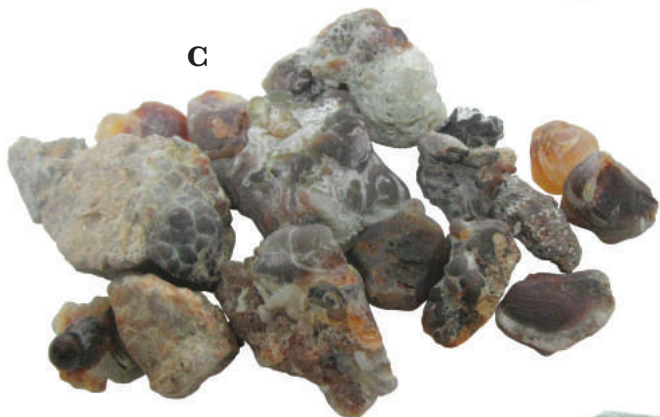
B #AD-COR-15

Our 1 pound bag of rough Corundum (Ruby & Sapphire) is a great novelty item.

\$15.00



C



C #FA-RGH-5

Fire Agate rough of 100+ grams TW.

\$5.00

D #NPH-J-25

Approx. 1 lb. bag of Nephrite Jade slabs.

\$25.00



E



E #MS-399

Set of twelve Fluorite octahedrons from Cave-in-Rock, IL. Under .50" in assorted natural Fluorite colors with some surface imperfections.

\$5.00

Items shown smaller than actual size.

**Visit our Crystal Gallery at
127 North Main Street, Greenville, KY 42345**

MINERALS

A **A #AM-QHD-10**
"Herkimer Diamond" Quartz Crystal (Herkimer, NY). \$10.00



B #MS-873
Amethyst point specimen ranging from .75"-2" long. \$2.50



C #KGG-MOH-7
Mohawkite specimen ranging in size from approx. .75"x1"x.25" to 1"x 1.25"x.75" Mohawkite is mainly a copper-arsenic compound. It also contains cobalt, silver, nickel and iron. Found only in Michigan. \$7.00



D #MS-319
1.5" - 1.75" Copper drop from the White Pine Mine in Michigan. Backs are flat for display. \$6.00



E **E #AM-TPZ-10**
Topaz specimen from Brazil. Approx. 1.25"x.5"x1.5". \$10.00



F #MS-877
Smithsonite specimen from Sinaloa, Mexico. Approx. 1.75"x2". Colors vary. \$5.00



G **G #MS-399**
Lot of five Black Tourmaline crystals (Minas Gerais, Brazil) that exhibit the hexagonal crystal shape. Our natural crystals are opaque with striations. Some have a termination point. Average height .5". \$10.00

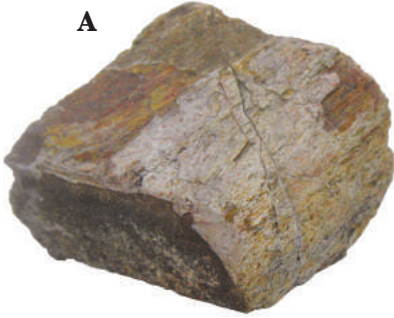


H #MS-962
Approx. 6.5"x8.5"x3"
Sphalerite specimen with
Fluorite and Galena
(Cave In Rock, Il.).
6.25 lbs. \$600.00



**Item H shown
smaller than actual
size.**

FOSSILS



A



B

A #DB-UT-2

Dinosaur bone (Utah). Under .25 lbs.

\$2.00

B #DB-UT-5

Dinosaur bone (Utah). .25 - .49 lbs.

\$5.00



C

C #DB-UT-9

Dinosaur bone (Utah). .50 - .99 lbs.

\$9.00

D #AM-PW-15

2" - 2 1/2" petrified wood from Madagascar.

\$15.00



D

E #AM-PW-30

2 1/2" - 3 3/4" petrified wood from Madagascar.

\$30.00



E



F

F #AM-FF-K-30

Knightia fossil fish (Green River Formation, Wyoming). Sizes and shapes vary.

\$30.00



G

G #AM-IRR-AM-45

Iridescent ammonite (colignoceras) fossil (Madagascar).

\$45.00

Items shown smaller than actual size.

Call us toll-free at 1-800-844-3100.

MEXICAN ONYX



A

A #WS-1

Mexican Onyx worrystones.
Lot of 100 pieces. Assorted
shapes in natural colors.

\$40.00

B #EG-4

Mexican Onyx eggs. Lot of twelve approx.
1" tall in assorted natural colors.

\$6.00



B

C #SA-0

Small Onyx animals. Lot of 100 pieces,
.75"-1.25" tall in assorted natural colors.
The lot may include frogs, bears, sitting
cats, dogs, penguins, burros, owls, giraffes,
horses, dinosaurs, ducks, elephants, sitting
mules, turtles and seals.

Reg. \$30.00 **Now \$15.00**



C

D



D #MX-OF-25

Mexican Onyx dyed fruit assortment. Thirteen pieces ranging from 2.5"-4" long
including pineapple, mango, sugar cane, peach, banana and pear.

\$25.00

**Items shown smaller
than actual size.**

ORDER FORM VOL. 533 Early Autumn 2018

House of Onyx, Inc., 120 North Main St., Greenville, KY 42345

Web www.houseofonyx.com E-mail sales@houseofonyx.com Fax: 270-338-9169

Customer Service: Questions and Orders: 800-844-3100 9:00 a.m. - 4:30 p.m. CST

Ship To: Residential or Commercial
 Your Name _____
 Company Name _____
 Address _____
 City _____ State _____ Zip _____
 Day Phone () _____

Ship To: Same as Bill To Residential or Commercial
 Your Name _____
 Company Name _____
 Address _____
 City _____ State _____ Zip _____

Payment: Check Money Order Discover MasterCard VISA AmEx

Account Number

Expiration Date CVV# AMEX OTHER

Signature _____

Pg. #	Qty.		Price/Ea.	Total
	1	Black Star Sapphire (free with minimum order)		FREE
TOTAL FOR MERCHANDISE (\$25.00 Minimum Order)				\$
Basic \$12.00 Shipping Charge for orders under \$100.00				\$
Additional fees for heavy weights, insurance or special delivery will be added to your total.				\$
Subtotal				\$
KY Residents: Please add 6% sales tax or include a copy of resale tax number.				\$
Total				\$

We will choose the best shipment method unless you specify otherwise. Call for rush shipping charges.

Returns: Items must be returned in original condition within ten days from purchase date by insured delivery. Shortages and damages must be reported immediately. Keep shipping container and packing for further instructions.

E-mail Address _____

Would you like to receive our Email Specials? Y N

Sign up for email specials at
<http://www.houseofonyx.com/signup.aspx>

VOLUME 533

Early Autumn 2018

Fall Open House

September 13, 14 & 15 9:00am 'til 4:00pm

\$500.00 Discount

on purchase of \$1,000.00 or more

\$200.00 Discount

on purchase of \$500.00 or more

\$50.00 Discount

on purchase of \$200.00 or more

Must present catalog to receive discount.

Only one discount per customer at each location.

Discounts apply to regular priced merchandise only.
(Some exclusions apply.)

HOUSE of ONYX INC.

Established in 1967

120 North Main Street
Greenville, KY 42345-1504
Toll Free 800-844-3100
Local 270-338-2363
Fax 270-338-9169



sales@houseofonyx.com
www.houseofonyx.com



www.facebook.com/HouseOfOnyx

FREE Basic Shipping!

on \$100+ order from Volume 533!

Celebrating our 51st Year in Business!

PRSRT STD
U.S. POSTAGE
Paid
Lincoln, NE
Permit #365